

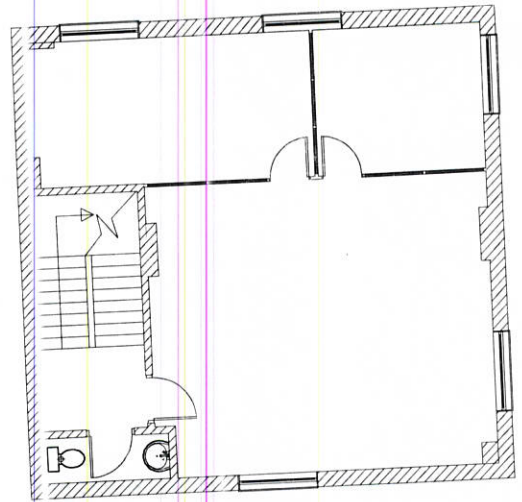
1:500 Site Plan of Skyline Village

Total Area for building = 2738 sq ft

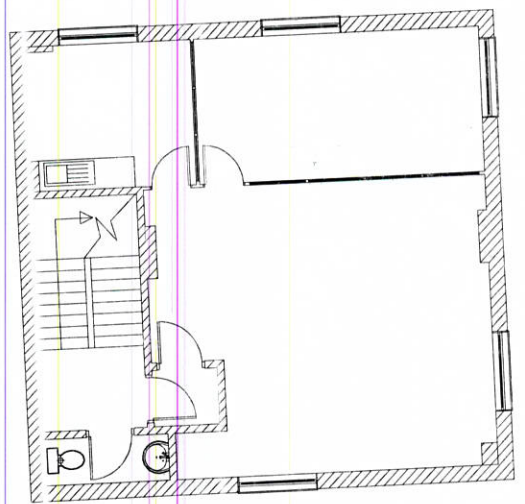
Area for each floor including share of common parts

Ground	= 895.16 sq ft
First	= 921.42 sq ft
Second	= 921.42 sq ft

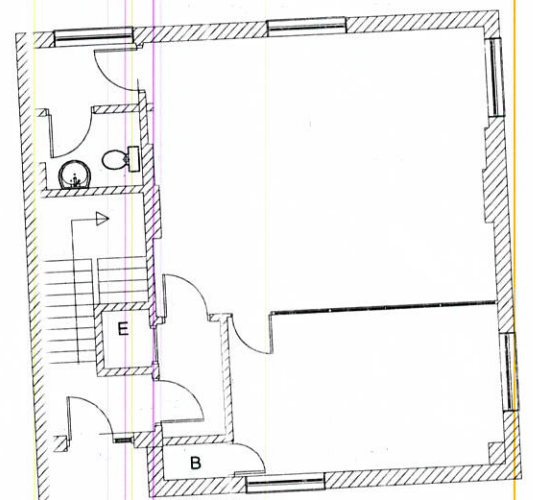
■ Red outlined areas are demised to the property.



SECOND FLOOR



FIRST FLOOR



GROUND FLOOR

1:100 Floor Plan

Drawing - Skyline Village - Unit 55  
 Scale - 1:500 / 100 @ A3  
 Date issued - 09.11.16